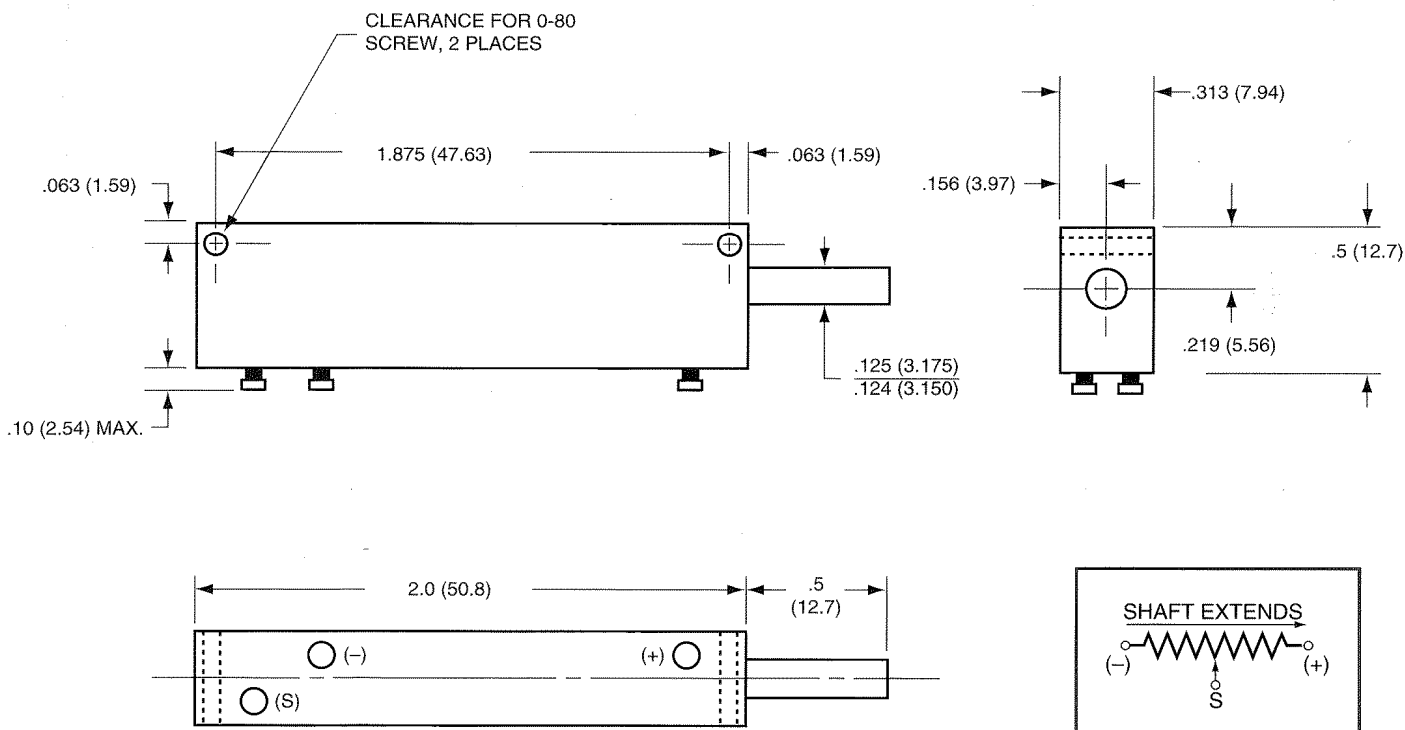


LINEAR MOTION PRECISION POTENTIOMETERS

MODEL 120 TUFF-LINE

INFINITE RESOLUTION



SPECIFICATIONS

ELECTRICAL

Resistance Range $\pm 10\%$	500 Ohms/inch To 50KOhms/inch
Independent Linearity or Conformity	To $\pm 0.25\%$ (Depending on Stroke)
Electrical Stroke ± 0.005 inches	To 1 inch
Maximum number of taps*	1
Power Dissipation	1/4 Watt/inch
Temperature Range	-55°C to 125°C
Dielectric Strength	500V RMS

* See **OPTIONAL Electrical Characteristics**

MECHANICAL

Mechanical Travel Beyond Stroke	+0.0312, -0.0 inches
Starting Force (Max)	4oz @ 25°C
Stroke Velocity	50 inches/second
Shaft Free to Rotate	Yes
Weight	1oz Max

* See **OPTIONAL Mechanical Characteristics**