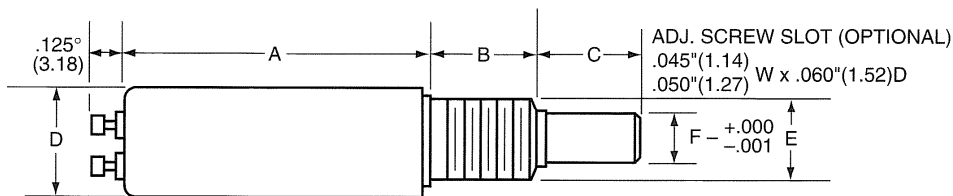
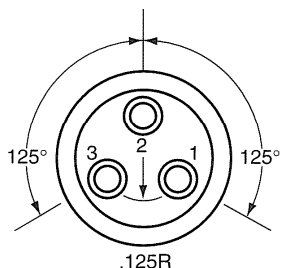


ROTARY PRECISION POTENTIOMETERS

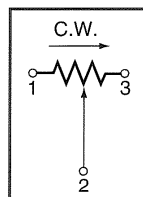
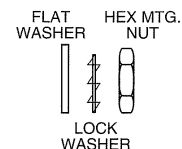
5000 SERIES

1/2" DIAMETER, WIRE-WOUND, MULTI-TURN



OPTIONAL COLLETED BUSHING OR LOCKNUT IS AVAILABLE

Lock washers and hex-mtg. nuts supplied with each unit.
Unless otherwise stated, tolerances are $\pm 0.015"$ (.38)



ORDERING INFORMATION

5000 — 50K
Indicate Type Number
Indicate Resistance Value

DIMENSIONS							
Length				Diameter			
Model	Turns	A (Overall)	B (Bushing)	C (Shaft)	D (Overall)	E (Bushing)	F (Shaft)
5000	10	1.469*(37.31)	.500*(12.70)	.500*(12.70)	.500*(12.70)	32 NEF 2A THD .375*(9.53)	.250*(6.35)
5005	5	1.031*(26.19)	.500*(12.70)	.500*(12.70)	.500*(12.70)	32 NEF 2A THD .375*(9.53)	.250*(6.35)

NOTE: Metric conversion in mm in brackets

SPECIFICATIONS

ELECTRICAL

	STANDARD
Power Rating	5000—1.5W @ 40°C 5005—1W @ 40°C
Standard Resistance Range	5000—100Ω to 100KΩ 5005—50Ω to 50KΩ
Resistance Tolerance	±5% std. (Closer available—consult factory)
Temperature Coefficient (wire)	±20ppm/°C max.
Linearity (independent)	±0.5% (±0.25% available—consult factory)
Noise During Adjustment (ENR)	100Ω max.
Absolute Minimum Resistance	1Ω or 0.25% (W.I.G.)
Insulation Resistance	1000MΩ @ 500 VDC min.

MECHANICAL

	STANDARD
Operating Temperature Range	-65° to +125°C
Total Adjustment Turns	5000—10T; 5005—5T

Mechanical Rotation

Same as electrical rotation

Operating Torque

2 oz.-in. max.

Mechanical Stops

100 oz.-in.

Electrical Travel

5000—3600° (+4°-0°)
5005—1800° (+4°-0°)

ENVIRONMENTAL

Models 5000 and 5005 meet, or exceed, all of the environmental and life requirements of MIL-R-12934.

Standard Resistance Values Available (Ω)

Nominal Resolution (%)

	5000	5005
50	—	0.192
100	0.095	0.154
250	0.073	0.112
500	0.056	0.121
1K	0.060	0.096
2.5K	0.043	0.063
5K	0.031	0.059
10K	0.029	0.052
25K	0.020	0.038
50K	0.018	0.028
100K	0.015	—

-- An Electromotive Solutions Company --

2800 ANVIL STREET NORTH • ST. PETERSBURG, FL 33710 USA • PHONE: (727) 347-2181 • Fax: (727) 347-7520