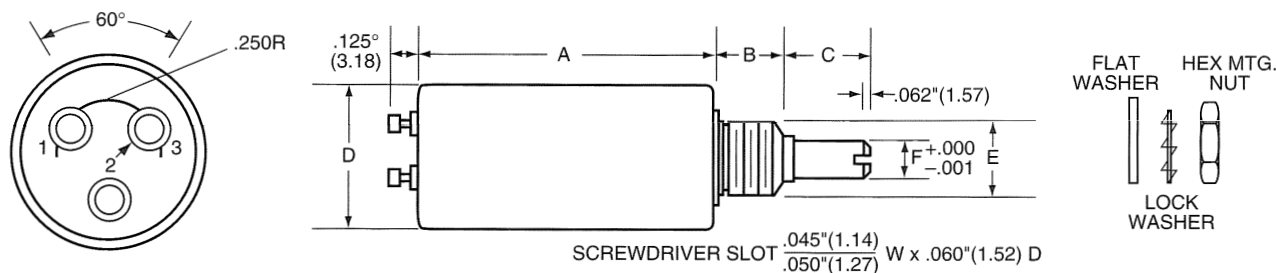


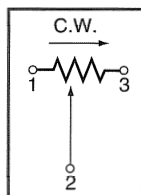
# ROTARY PRECISION POTENTIOMETERS

## 7400 SERIES

### 3/4" DIAMETER WIRE-WOUND, MULTI-TURN



Non standard shaft extensions available.  
Lock washers and hex-mtg. nuts supplied with each unit.  
Unless otherwise stated, tolerances are  $\pm .015" (.38)$



**ORDERING INFORMATION**  
7400 — 100K  
Indicate Type Number  
Indicate Resistance Value

DIMENSIONS							
		Length			Diameter		
Model	Turns	A (Body)	B (Bushing)	C (Shaft)	D (Overall)	E (Bushing)	F (Shaft)
7400	10	1.125"(28.58)	.312"(7.92)	.500"(12.55)	.750"(19.05)	$\begin{matrix} 32 \text{ NEF } 2\text{A THD} \\ .375" (9.53) \end{matrix}$	.250"(6.35)
7405	5	.750"(19.05)	.312"(7.92)	.500"(12.55)	.750"(19.05)	$\begin{matrix} 32 \text{ NEF } 2\text{A THD} \\ .375" (9.53) \end{matrix}$	.250"(6.35)

NOTE: Metric conversion in mm in brackets

## SPECIFICATIONS

### ELECTRICAL

	STANDARD
Power Rating	7400—3W @ 40°C 7405—2W @ 40°C
Standard Resistance Range	7400—100Ω to 100KΩ 7405—100Ω to 50KΩ
Resistance Tolerance	±5% std.
Temperature Coefficient (wire)	±20ppm/°C max.
Linearity (independent)	7400—±0.25% (±0.1% available) 7405—±0.5% (±0.25% available)
Noise During Adjustment (ENR)	100Ω max.
Absolute Minimum Resistance	1Ω or 0.25% (W.I.G.)
Insulation Resistance	1000MΩ @ 500 VDC

### MECHANICAL

	STANDARD
Operating Temperature Range	-65° to +125°C
Total Adjustment Turns	7400—10T; 7405—5T

Mechanical Rotation

Same as electrical rotation

Operating Torque

2 oz.-in. max.

Mechanical Stops

100 oz.-in.

Electrical Travel

7400—3600° (+6°-0°)  
7405—1800° (+6°-0°)

### ENVIRONMENTAL

Models 7400 and 7405 meet, or exceed, all of the environmental and life requirements of MIL-R-12934.

Standard Resistance Values Available (Ω)

Nominal Resolution (%)

	7400	7405
100	0.055	0.096
250	0.041	0.086
500	0.035	0.058
1K	0.028	0.047
2.5K	0.018	0.040
5K	0.020	0.037
10K	0.018	0.031
25K	0.015	0.022
50K	0.010	0.018
100K	0.009	—

-- An Electromotive Solutions Company --

2800 ANVIL STREET NORTH • ST. PETERSBURG, FL 33710 USA • PHONE: (727) 347-2181 • Fax: (727) 347-7520