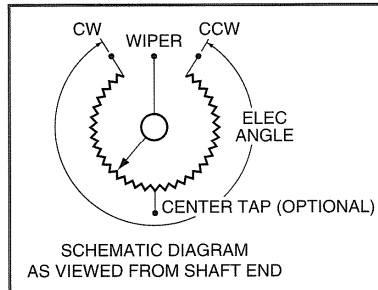


ROTARY PRECISION POTENTIOMETERS

RC SERIES

WIRE-WOUND, SINGLE-TURN

(Single or Multi-Gang, Field Phaseable)



SPECIFICATIONS

SIZE		09	11	15	18	20	30
Case Diameter	inch	7/8	1-1/16	1-7/16	1-3/4	2"	3"
(Nominal)	mm.	22	27	37	44	51	76

ELECTRICAL

Resistance Range	Std.	50-50K	100-80K	100-100K	100-150K	100-200K	500-400K	
(Ohms)	Max. Avail.	125K	200K	250K	400K	500K	1 Meg.	
Resistance Tolerance		±5% Standard				± 1% Available		
Linearity	(±%)	.15-.40	.10-.30	.08-.25	.06-.20	.05-.20	.03-.15	
Resolution*	(%)	.036-.24	.025-.165	.020-.10	.017-.10	.015-.14	.01-.09	
Electrical Angle		350° Standard – Other Angles Available						
Power Rating (Watts @ 40° C)		2.0	2.0	3.5	3.5	5.0	8.0	
Insulation Resistance		500 Megohms @ 500 Volts DC						
Dielectric Strength		750 V RMS			1000 V RMS			
Noise (Enr)		100 Max. Standard – Lower Available						
Wire T/C (PPM/°)		±20 to +750						

MECHANICAL

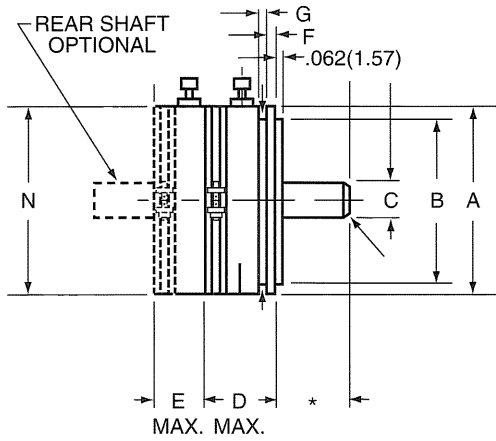
Mechanical Angle		360° Continuous – Angle Limiting Stops Avail.					
Max. Ganged Sections		8	8	8	8	8	8
Torque	Single	.10	.15	.25	.3	.3	.5
(Oz. In.)	Add./Section	.07	.11	.15	.2	.2	.4
Moment of	Single	.41	.68	.8	.8	1.5	2.0
Inertia (gcm ²)	Add./Section	.41	.68	.8	.8	1.5	2.0
Weight	Single	.6	.8	2.8	3.0	3.5	6.0
(Oz.)	Add./Section	.50	.5	1.3	1.5	2.0	3.5
Additional Taps	(Max.)	9	12	19	19	22	33
Temperature Range		-65° to +125°C					
Life		1,000,000 Revolutions (Dependent upon Application and Failure Criteria)					

*Dependent upon Resistance and Type of Function

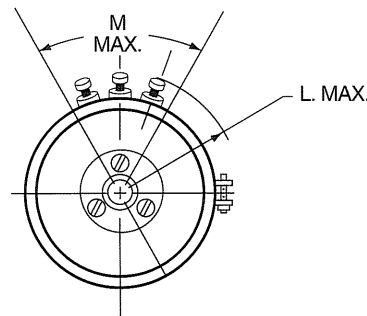
Shaft is ball bearing mounted both front and rear

RC SERIES

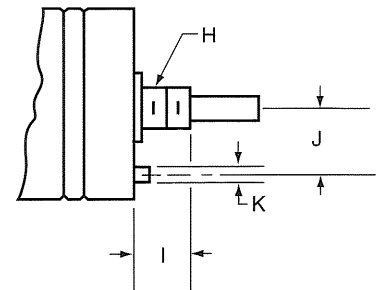
ROTARY PRECISION POTENTIOMETERS WIRE-WOUND, SINGLE-TURN, (Single or Multi-Gang, Field Phaseable)



SERVO MOUNT



SHAFT END VIEW



BUSHING MOUNT

NOTE: Dimension "D" is the overall length for single gang unit. Dimension "E" is the increment for additional gangs, i.e.:
5 gang unit equals D + 4 X E.

*Standard Shaft Length: .625±.031 (15.87± 0.8mm)

Other Lengths Optional

Lateral, Pilot & Shaft Runout: .001 (0.0254mm) max.

SIZE	A	B	C	D	E	F	G	H	I	J	K	L	M	N
RC 09	.875 (22.22)	.750 (19.05)	.1248 (3.17)	.66 (16.76)	.44 (11.18)	.062 (1.575)	.062 (1.575)	1/4-32 NEF	.250 (6.35)	.312 (7.92)	.062 (1.57)	.625 (15.88)	90° (90°)	.965 (24.51)
RC 11	1.062 (27.0)	.9688 (24.608)	.1248 (3.17)	.63 (16.0)	.47 (11.94)	.062 (1.575)	.062 (1.575)	1/4-32 NEF	.250 (6.35)	.312 (7.92)	.062 (1.57)	.705 (17.91)	72° (72°)	1.065 (27.05)
RC 15	1.4345 (36.43)	1.3125 (33.34)	.2498 (6.345)	.812 (20.62)	.500 (12.7)	.093 (2.365)	.073 (1.85)	3/8-32 NEF	.375 (9.5)	.500 (12.7)	.125 (3.17)	1.094 (27.79)	100° (100°)	1.468 (37.29)
RC 18	1.750 (44.45)	1.562 (39.67)	.2498 (6.345)	.910 (23.11)	.515 (13.08)	.093 (2.365)	.073 (1.85)	3/8-32 NEF	.375 (9.5)	.500 (12.7)	.125 (3.17)	1.125 (28.58)	60° (60°)	1.755 (44.58)
RC 20	2.00 (50.80)	1.875 (47.62)	.2498 (6.345)	.940 (23.88)	.515 (13.08)	.093 (2.365)	.073 (1.85)	3/8-32 NEF	.375 (9.5)	.500 (12.7)	.125 (3.17)	1.234 (31.34)	45° (45°)	2.005 (50.93)
RC 30	3.00 (76.20)	2.875 (73.02)	.2498 (6.345)	.940 (23.88)	.515 (13.08)	.093 (2.365)	.073 (1.85)	3/8-32 NEF	.375 (9.5)	.500 (12.7)	.125 (3.17)	1.735 (49.15)	30° (30°)	3.005 (76.33)

NOTE: Metric Conversion in mm in Brackets



An Electromotive Solutions Company
ISO 9001:2000 & AS9100:2004 Certified
2800 ANVIL STREET NORTH ST. PETERSBURG, FL 33710 USA
PHONE: (727) 347-2181 Fax: (727) 347-7520 Email: sales@vsensors.com